



Funded by
the European Union

The Living Lab Approach for Vulnerable Communities

Wednesday, 21 May 2025

10:00 – 12:00





Housekeeping rules!



The session
is recorded



Keep your
mic muted
when not
talking



Raise your
hand if you
have a
question



All interventions
are equally
valid



Agenda

- 10.00** Welcome & Introduction
- 10.05** Introduction to Living Labs (Alessandra Tricarico, ENoLL)
- 10.20** Comon Living Lab, Ghent (Jeroen Bourgonjon)
- 10.35** Social Digital Lab (Suara), Barcelona (Clara G Garcia Blanch)
- 10.50** Thess-AHALL, Thessaloniki (Despoina Mantziari)
- 11:05** Panel Discussion
- 11:40** Q&A
- 11:50** Summary and Next Steps

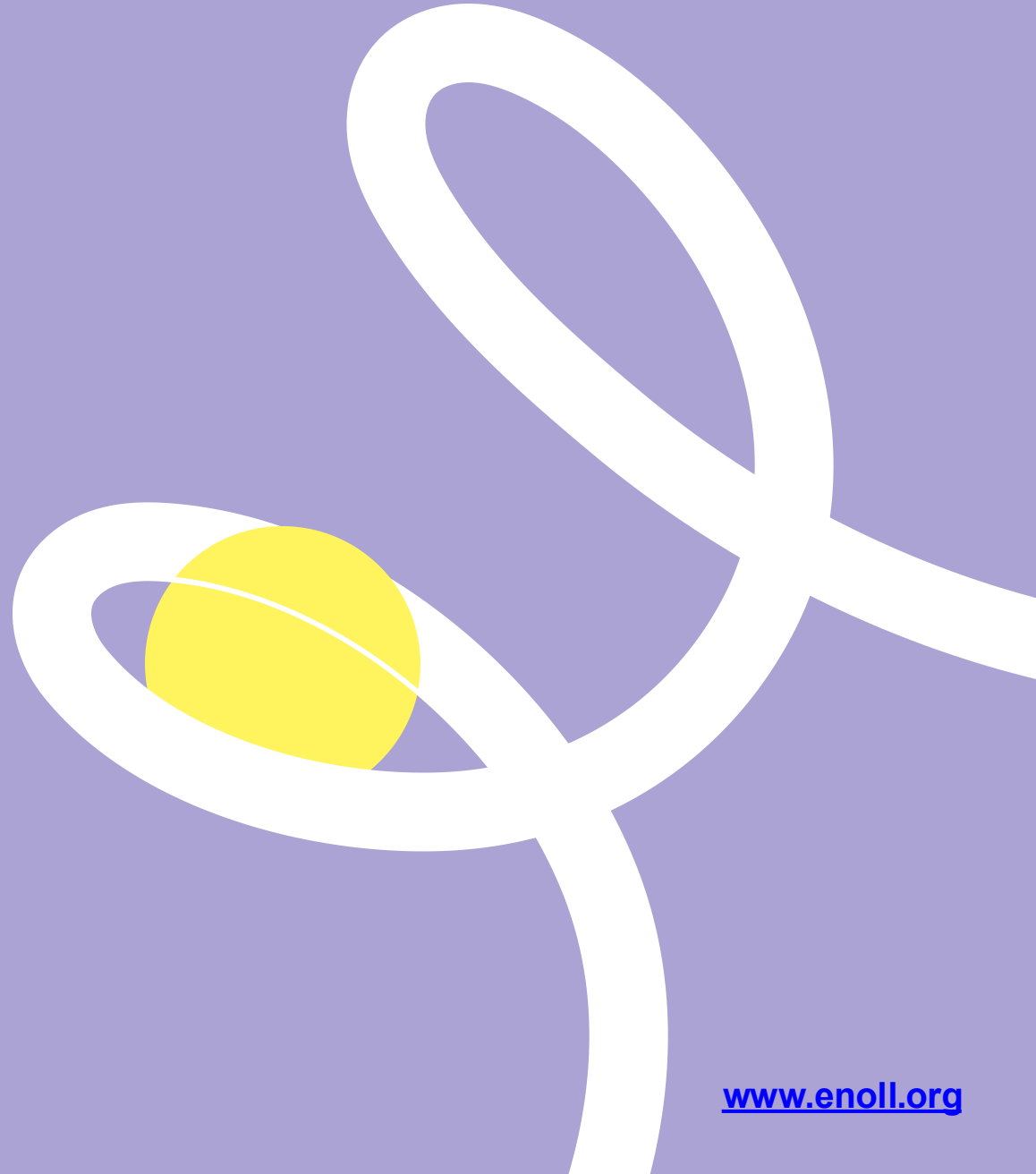


European
Network of
Living Labs

Introduction to Living Labs

ENoLL – European Network of Living Labs

21 May 2025



www.enoll.org

**European
Network of
Living Labs**

ENoLL – European Network of Living Labs



European Network of Living Labs

ENoLL is the international non-profit association
of certified Living Labs

- Founded in 2006 under the auspices of the Finnish European Presidency
- ENoLL focuses on facilitating **knowledge exchange**, **joint actions** and **project partnerships** among its members
- It aims to promote the Living Labs concept, support EU policies, enhance Living Labs and their sustainability and enable their implementation at a global level.
- ENoLL growing community includes members that operate by the main living lab principles such as **multi-stakeholder co-creation**, iterative active user involvement and **real-life intervention**.

+500
historically
certified
living labs

5 continents
39 countries

~ 171 active
members (89%
in Europe)

A path to grow



MISSION

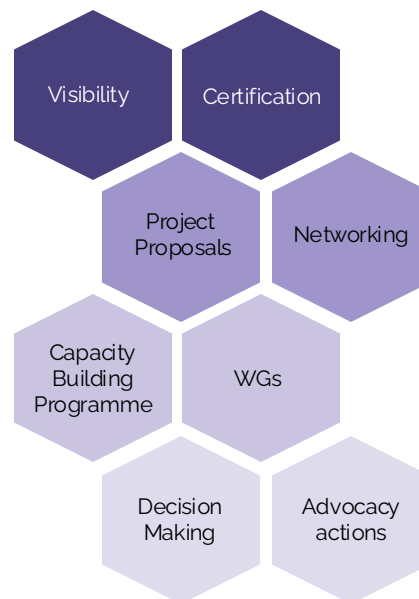
ENoLL mission is to be an **Ambassador** of European values of **co-creation** and **open innovation**, to provide value to its **members** and external **stakeholders** by offering them **opportunities** to develop their **capacities & knowledge** in order to strengthen them in **developing and scaling-up** impactful innovative products & services and expanding their own value to their own stakeholders



VISION

ENoLL aims to be the leading organization empowering the **global** development of Living Labs as **enablers** of **impactful** open innovation ecosystems where everyone can co-create and innovate via cross-border & cross-sectoral **collaboration** in an **inclusive** way

MEMBERS VALUE OFFER



Certification & Labelling
Quality evaluation procedure, formal certification



Capacity Building
Learning programmes for LL creation and ENoLL certification



Working Groups
Knowledge exchange & collaboration on hot topics



ENoLL Network Composition

Apr 2025

171 Active ENoLL Members

25

Effective Members

135

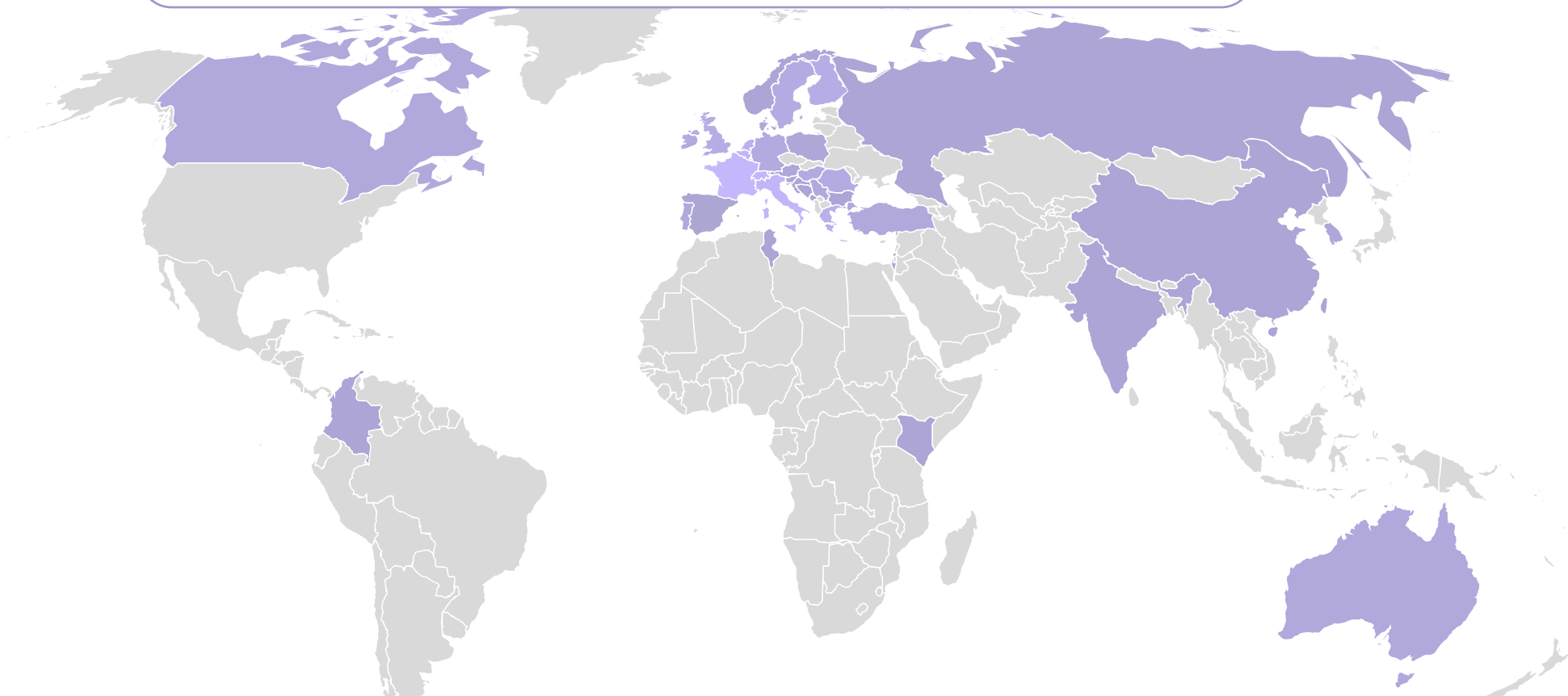
Adherent Members

7

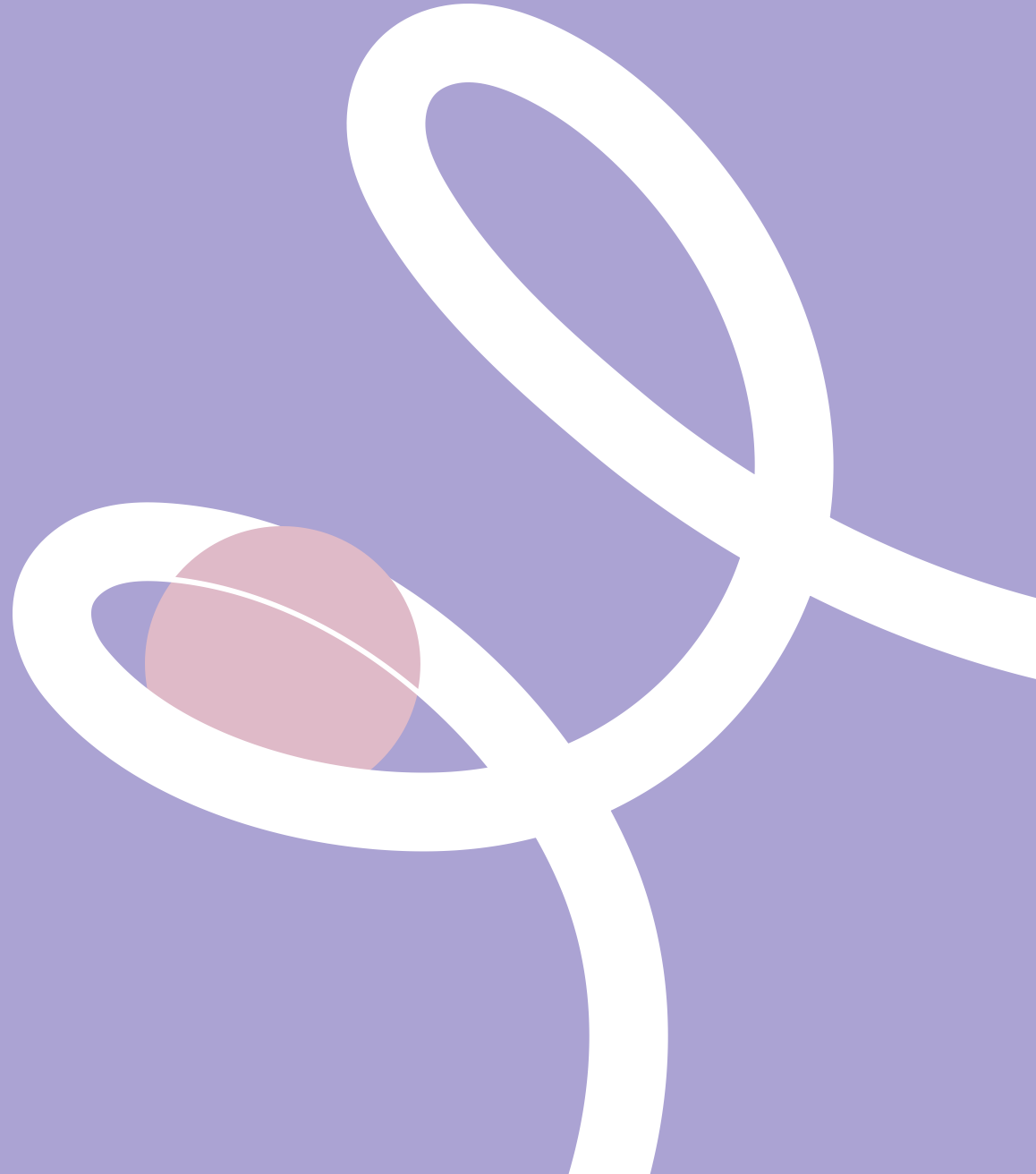
Accepted to Grow

4

Innovation Partners



What are Living Labs... and what are NOT?



Living Labs are more than just a physical space...



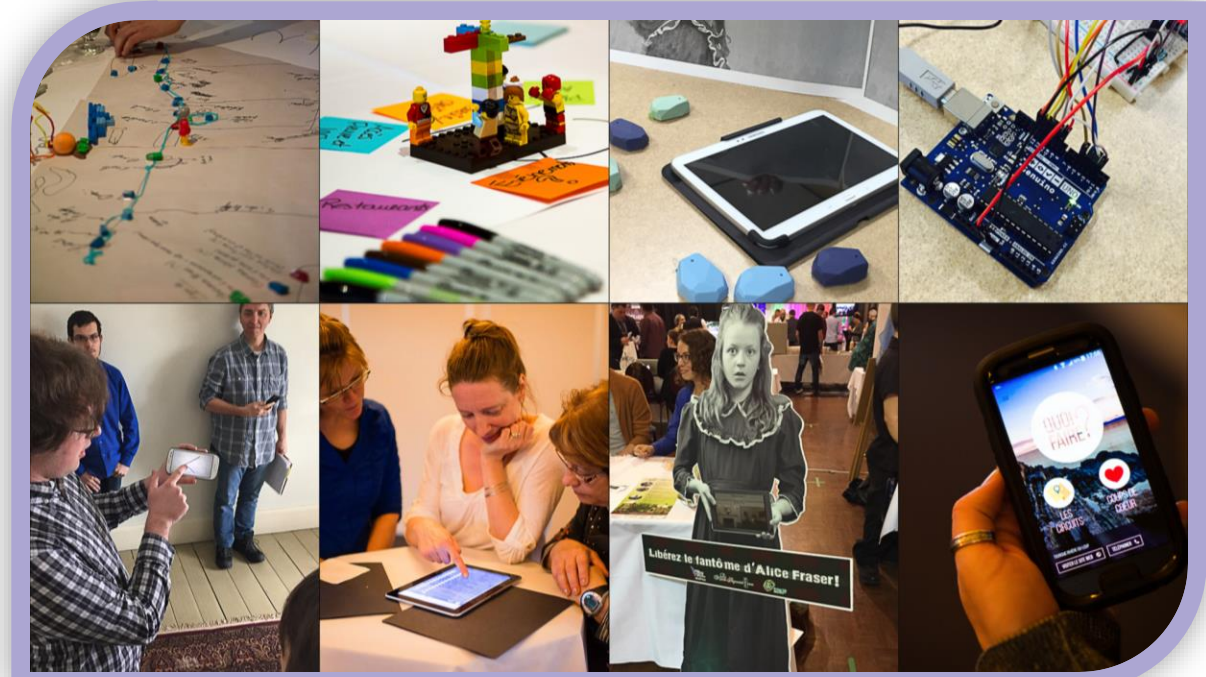
Başakşehir Living Lab (ENoLL member), Başakşehir, Turkey

It's about the people and what happens within...

A Living Lab wouldn't exist without the **people** and the **activities** taking place in and around it.

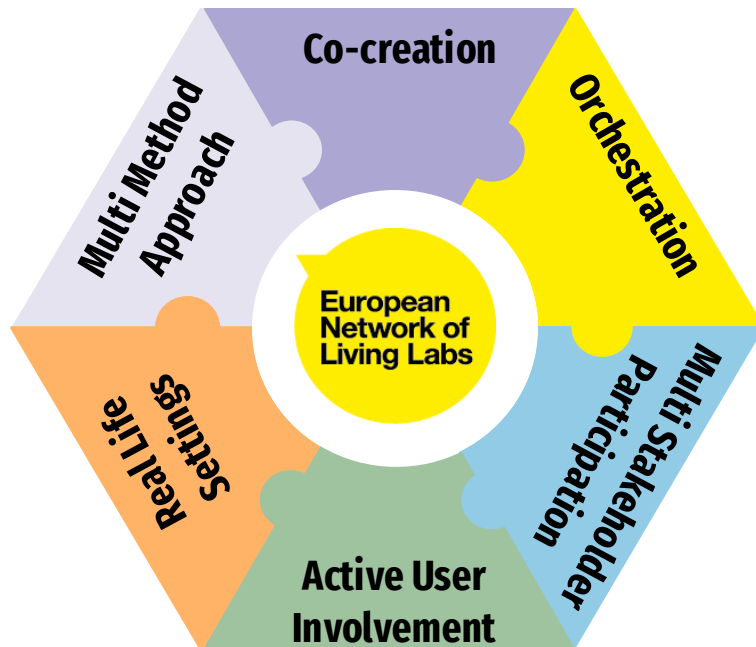
It is all about:

- **Dynamic interactions** between stakeholders
- **Co-creation processes** that involve users from the start
- Developing innovative solutions **with and for the community**



What are Living Labs?

Living Labs are **open innovation ecosystems** in **real-life environments** based on a **systematic user co-creation approach** that integrates research and innovation activities in communities, placing **citizens at the centre of innovation**



Living Labs are a modern tool for research adapted to the needs of today, where citizens can contribute to the co-research.

They are open innovation ecosystems in **real-life** environments using **iterative feedback processes** throughout the lifecycle approach of an innovation.



LLs are open innovation ecosystems

Living Labs are **open innovation ecosystems** in **real-life environments** based on a **systematic user co-creation approach** that integrates research and innovation activities in communities, placing **citizens at the centre of innovation**

Open Innovation: tapping into knowledge that exists *outside your organisation by engaging with others* to co-create solutions in real-life settings.

User-Driven Innovation: placing end-users, such as citizens or clients, at the **center of the innovation process**. They are not just consulted but **actively involved** in the innovation process.



LLs in real-life environments

Living Labs are **open innovation ecosystems** in **real-life environments** based on a **systematic user co-creation approach** that integrates research and innovation activities in communities, placing **citizens at the centre of innovation**

Living Labs operate in **real-life settings**, not in artificial or controlled environments. This means that innovation is tested and developed **directly in the context where it will be used**.

But real-life setting is not sufficient alone...



It's the people, interactions, systems, and infrastructure within the real-life setting that truly make it a Living Lab

URBAN LIVING LAB



Infrastructure &
technology

Citizens

Urban planners

Real estate professionals

Public administration

Commerce & retailers

Academics &
researchers

HEALTH LIVING LAB

Ethics Manager

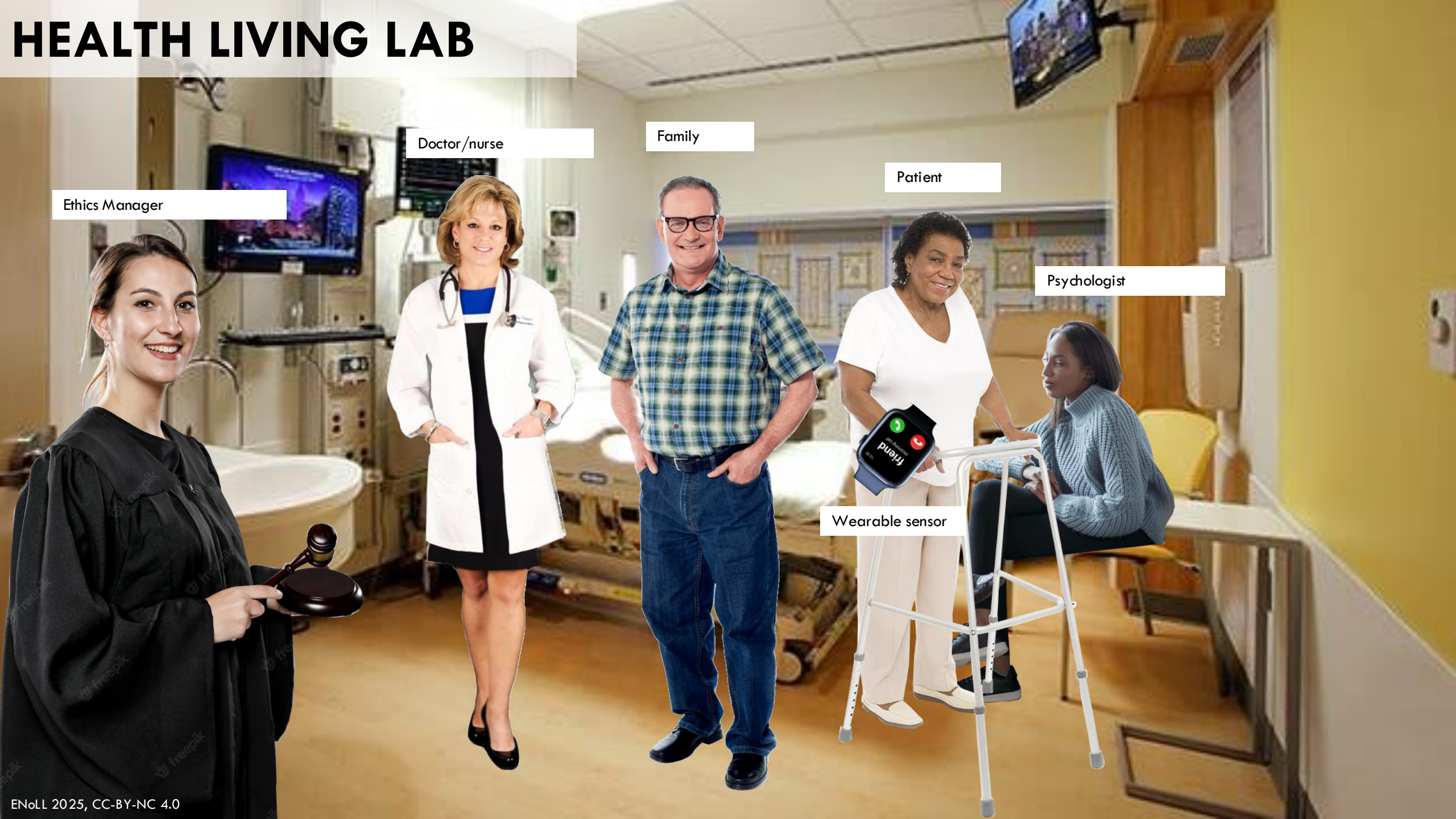
Doctor/nurse

Family

Patient

Psychologist

Wearable sensor

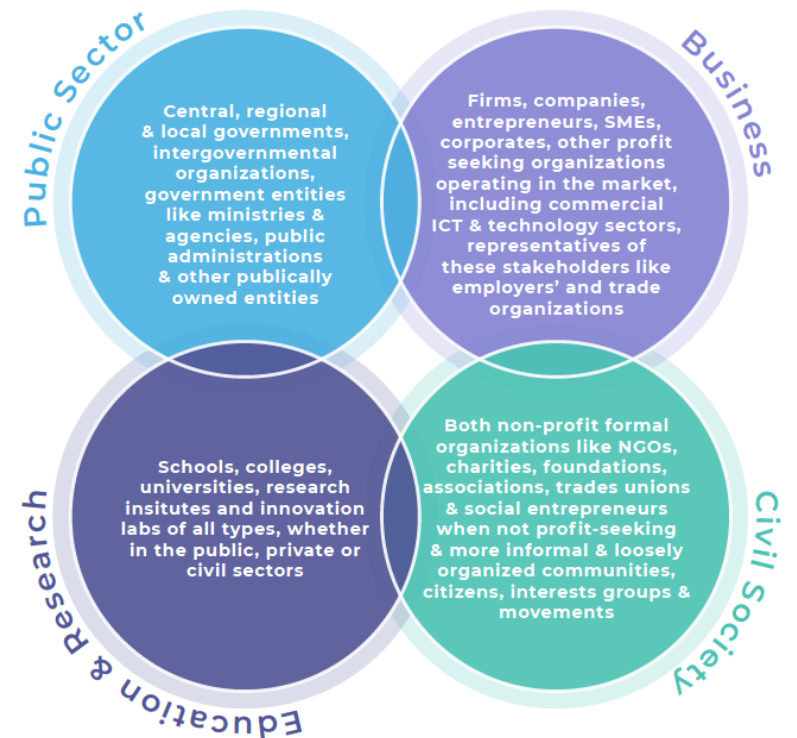


LLs based on a systematic user co-creation approach

Living Labs are **open innovation ecosystems** in **real-life environments** based on a **systematic user co-creation approach** that integrates research and innovation activities in communities, placing **citizens at the centre of innovation**

Living Labs operate as **intermediaries** among **citizens, research organisations, companies and government agencies** or levels for joint-value co-creation, rapid prototyping or to scale up innovation and businesses.

Industry, Academia, Public Authorities and Citizens are part of the so-called **Quadruple Helix model (QHM)**, where users are placed at the heart of the innovation ecosystem.





All for One and One for All

And what a Living Lab is not ?

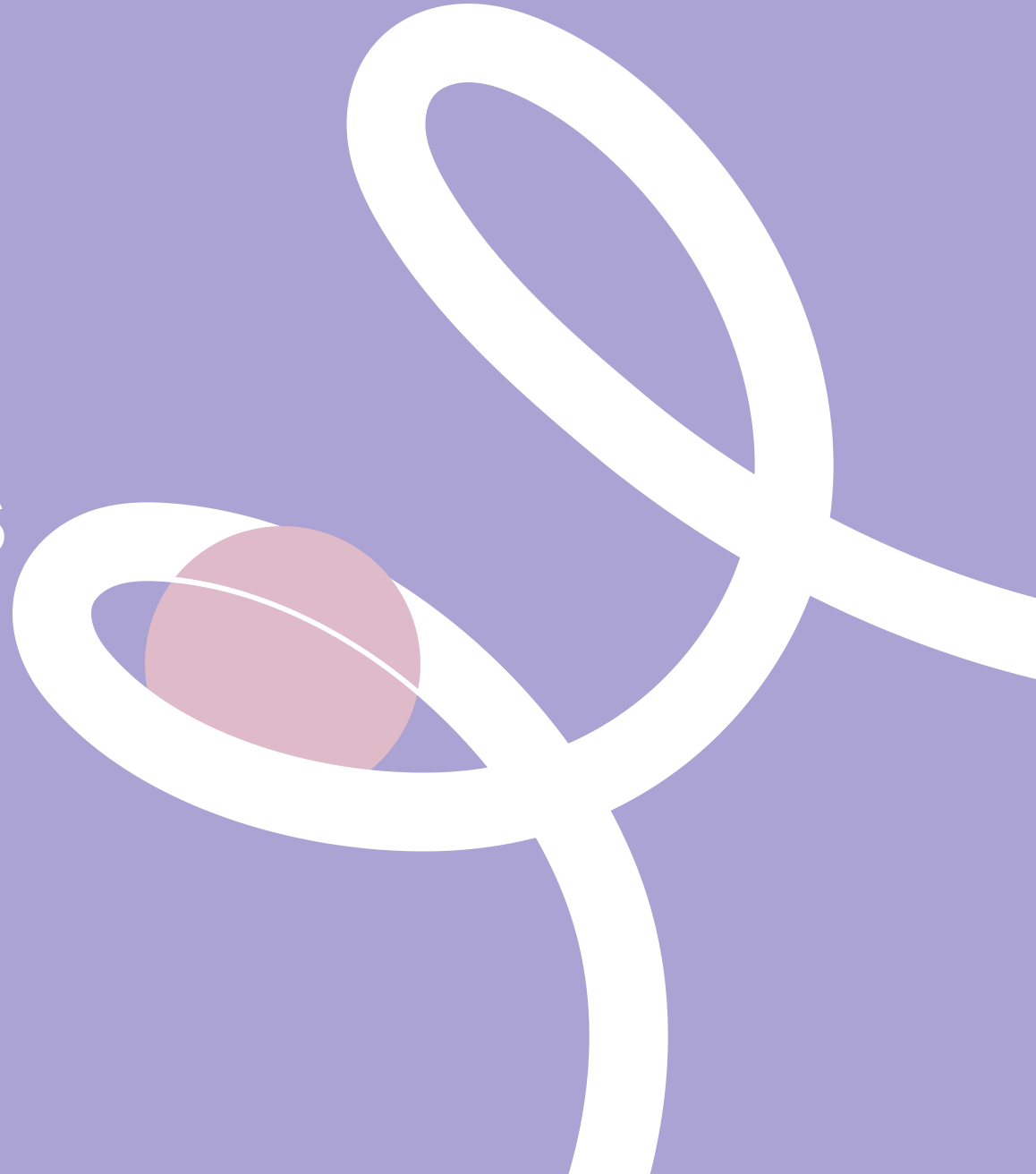
A Test Bed is a “Pre-Living Lab” setting enabling rigorous, transparent, and replicable testing of scientific theories, computational tools and new technologies in a controlled environment (not in real-life), with users often represented mainly by researchers. Compared to Living Labs, they show a smaller scale and level of analysis (e.g. one building compared to a city).

A Fablab: “fabrication laboratory” is a small-scale workshop offering digital fabrication. A fab lab is typically equipped with an array of flexible computer-controlled tools that cover several different length scales and various materials, for developing technology-enabled products to mass production.

A Home Lab (originated at MIT with Prof. Mitchell) they focused on testing and adapting new technologies based on their fit with the daily home environment.

**European
Network of
Living Labs**

Main building blocks of Living Labs

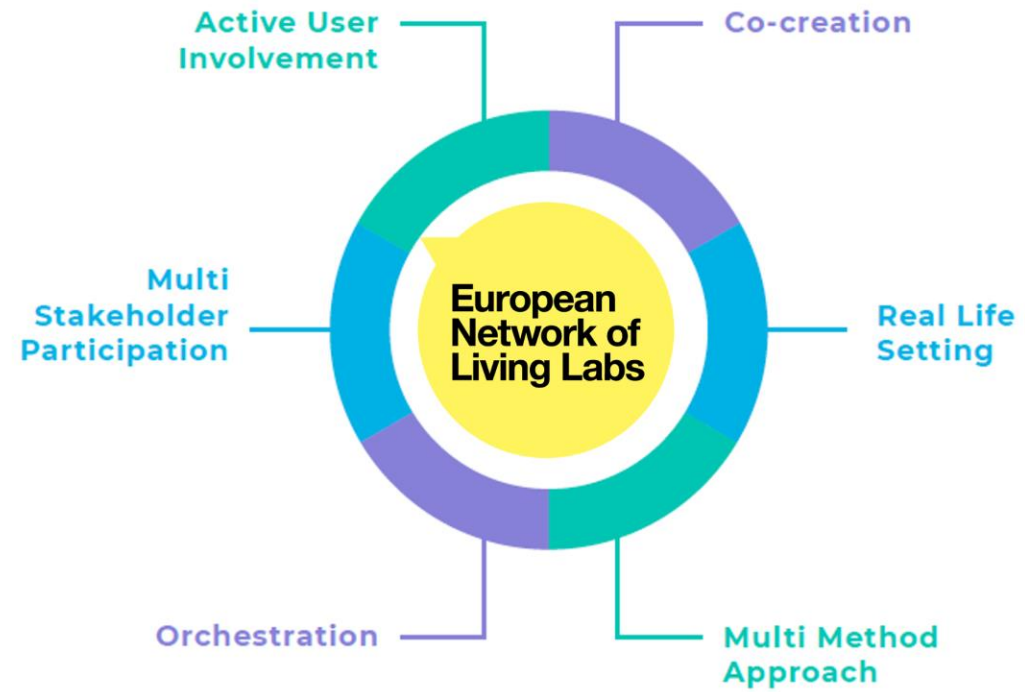


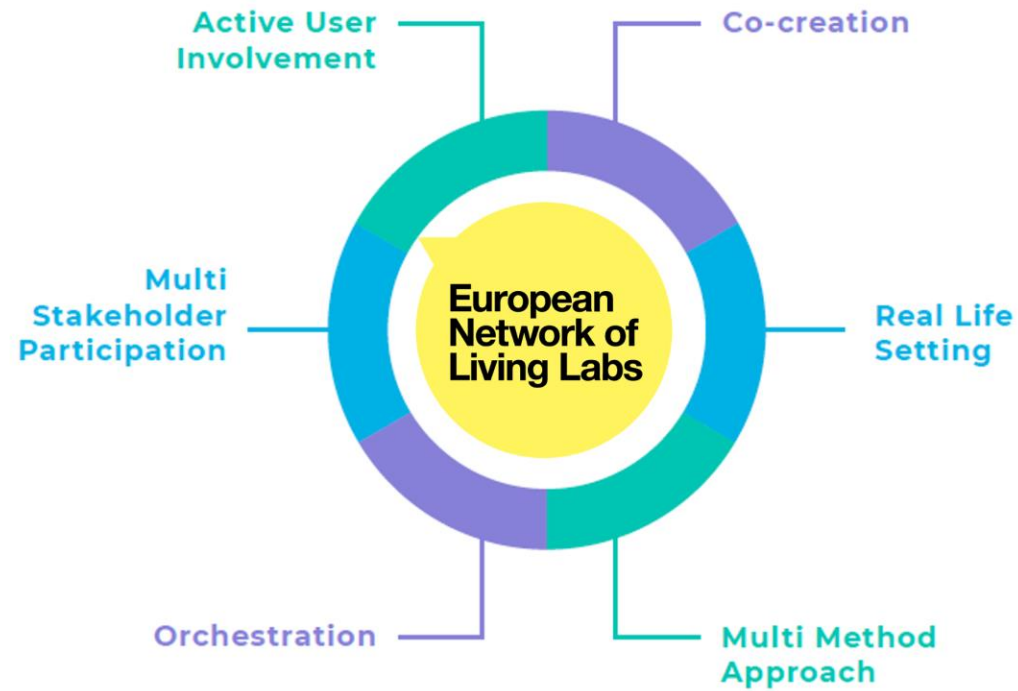
Living Labs: main Building Blocks

Living Labs can vary in terms of focus, areas of work, context, or scale.

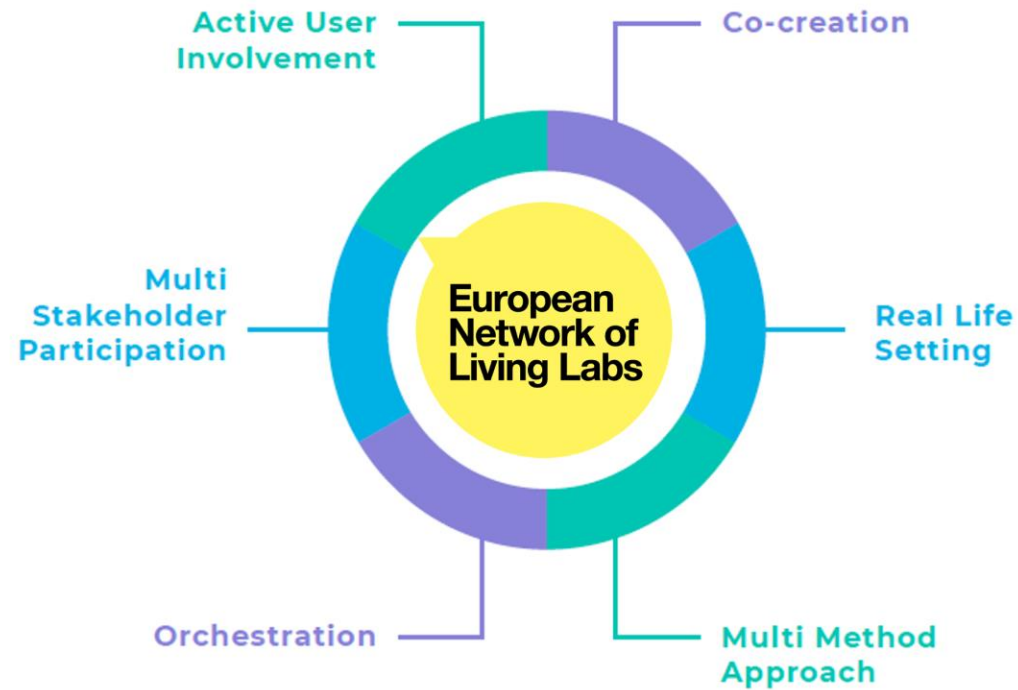
But, they all share a **common foundation** made up of key characteristics (building blocks).





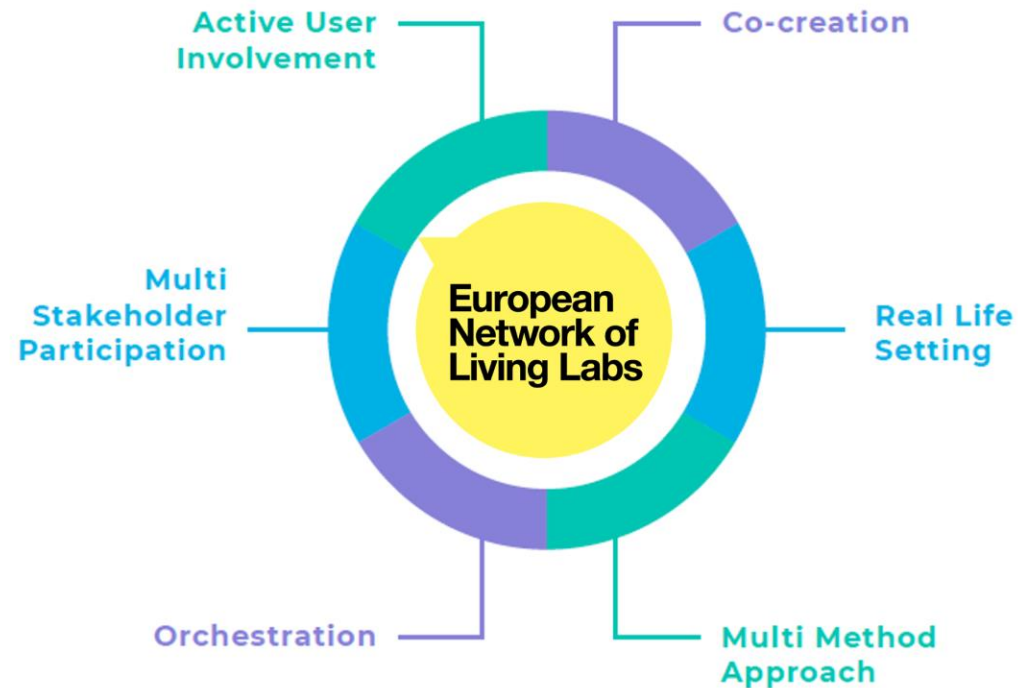


In a Living Lab values are **bottom-up co-created** not only for but also by all relevant stakeholders, ensuring a **higher adoption** at the end.



In a Living Lab values are **bottom-up co-created** not only for but also by all relevant stakeholders, ensuring a **higher adoption** at the end.

A Living Lab operates in the **real-life setting of the end users**, infusing innovations into their real life instead of moving the user to test sites to explore the innovations.

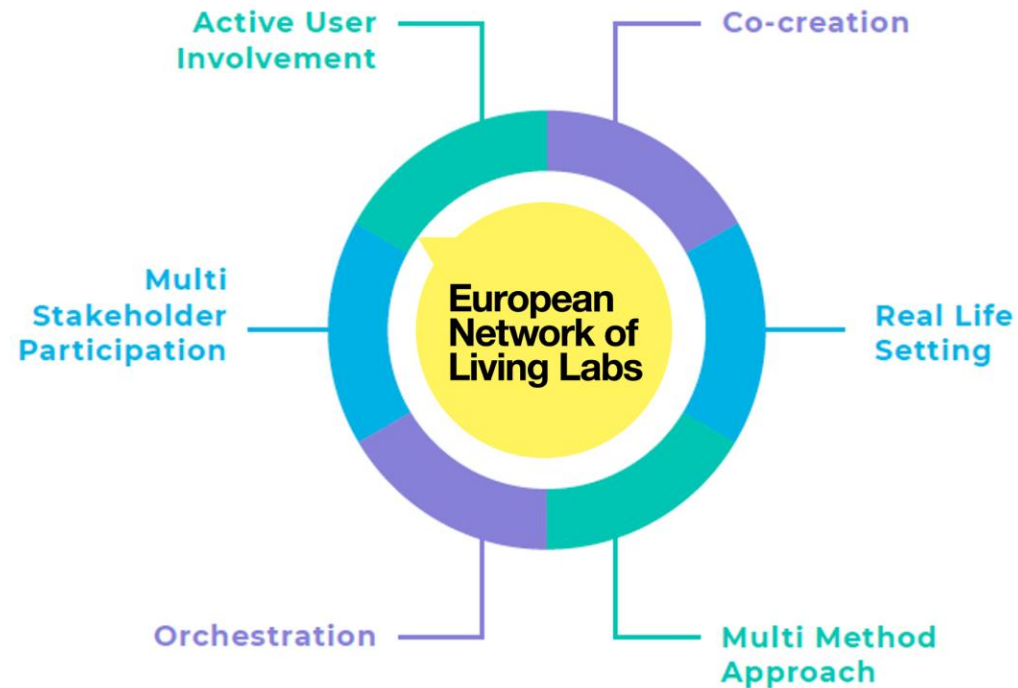


In a Living Lab values are **bottom-up co-created** not only for but also by all relevant stakeholders, ensuring a **higher adoption** at the end.

A Living Lab operates in the **real-life setting of the end users**, infusing innovations into their real life instead of moving the user to test sites to explore the innovations.

Each Living Lab activity is **problem driven**. Therefore, the methodological approach towards every individual activity will be **selected based on the expected outcomes of the activity and the stakeholders** who needs to be involved.

Taking a **holistic view on society**, involving stakeholders from the **quadruple helix model** (government, academia, private sector and citizens)/



In a Living Lab values are **bottom-up co-created** not only for but also by all relevant stakeholders, ensuring a **higher adoption** at the end.

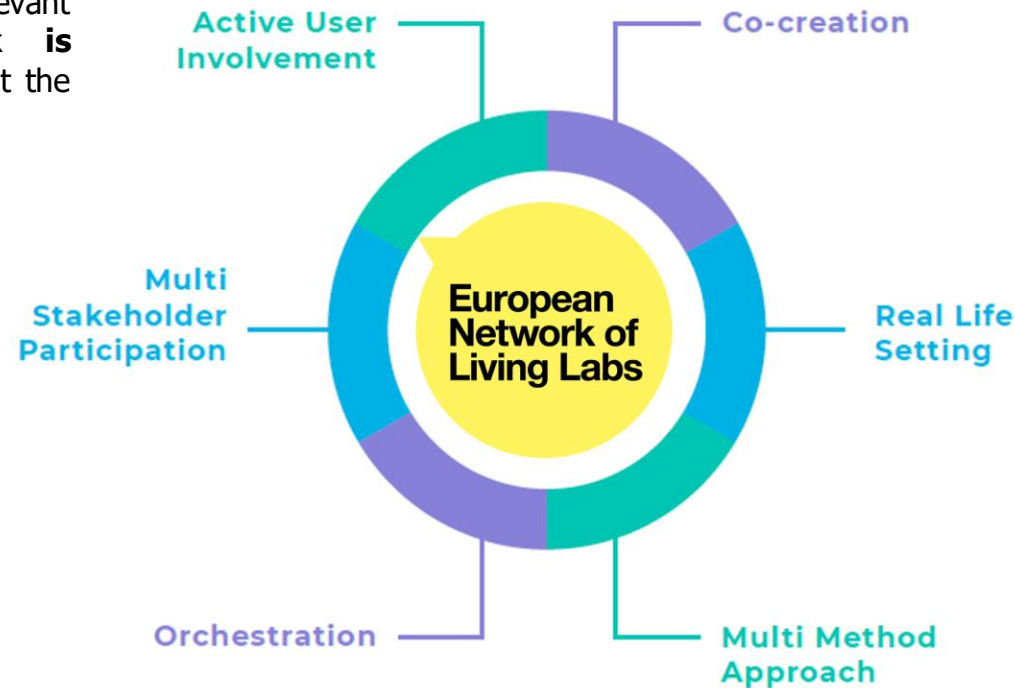
A Living Lab operates in the **real-life setting of the end users**, infusing innovations into their real life instead of moving the user to test sites to explore the innovations.

Each Living Lab activity is **problem driven**. Therefore, the methodological approach towards every individual activity will be **selected based on the expected outcomes of the activity and the stakeholders** who needs to be involved.

European Network of Living Labs

A Living Lab involves **relevant stakeholders 'actively'** in all relevant activities, ensuring **their feedback is captured and implemented** throughout the whole lifecycle of the innovation.

Taking a **holistic view on society**, involving stakeholders from the **quadruple helix model** (government, academia, private sector and citizens)/



In a Living Lab values are **bottom-up co-created** not only for but also by all relevant stakeholders, ensuring a **higher adoption** at the end.

A Living Lab operates in the **real-life setting of the end users**, infusing innovations into their real life instead of moving the user to test sites to explore the innovations.

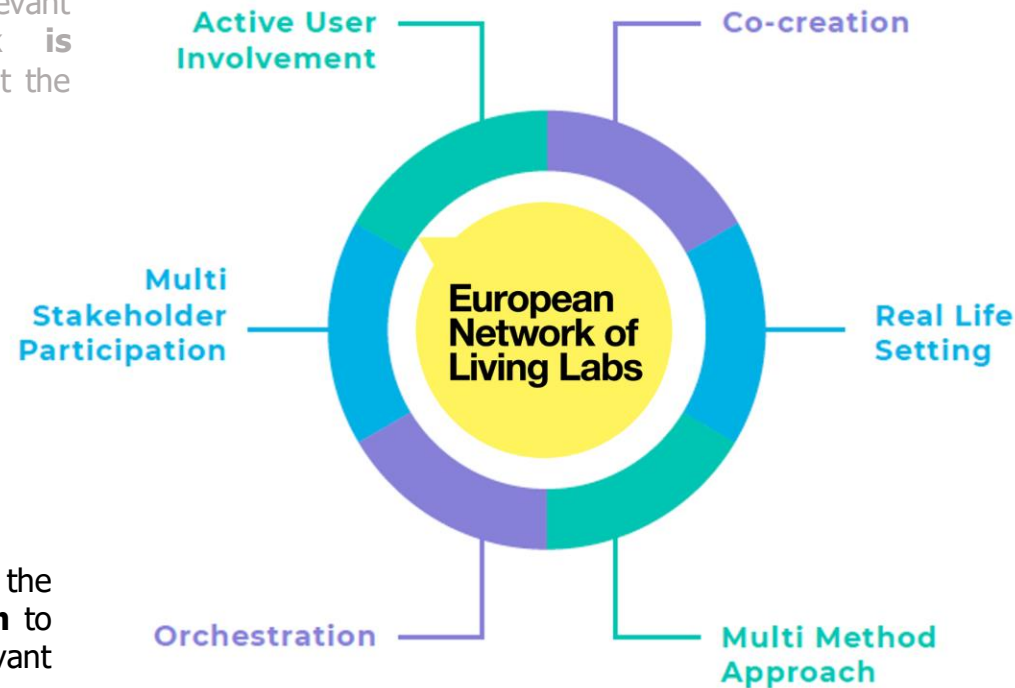
Each Living Lab activity is **problem driven**. Therefore, the methodological approach towards every individual activity will be **selected based on the expected outcomes** of the activity **and the stakeholders** who needs to be involved.

European Network of Living Labs

A Living Lab involves **relevant stakeholders 'actively'** in all relevant activities, ensuring **their feedback is captured and implemented** throughout the whole lifecycle of the innovation.

Taking a **holistic view on society**, involving stakeholders from the **quadruple helix model** (government, academia, private sector and citizens)/

The Living Lab operates as the **orchestrator within the ecosystem** to connect and **partner up** with relevant stakeholders



In a Living Lab values are **bottom-up co-created** not only for but also by all relevant stakeholders, ensuring a **higher adoption** at the end.

A Living Lab operates in the **real-life setting of the end users**, infusing innovations into their real life instead of moving the user to test sites to explore the innovations.

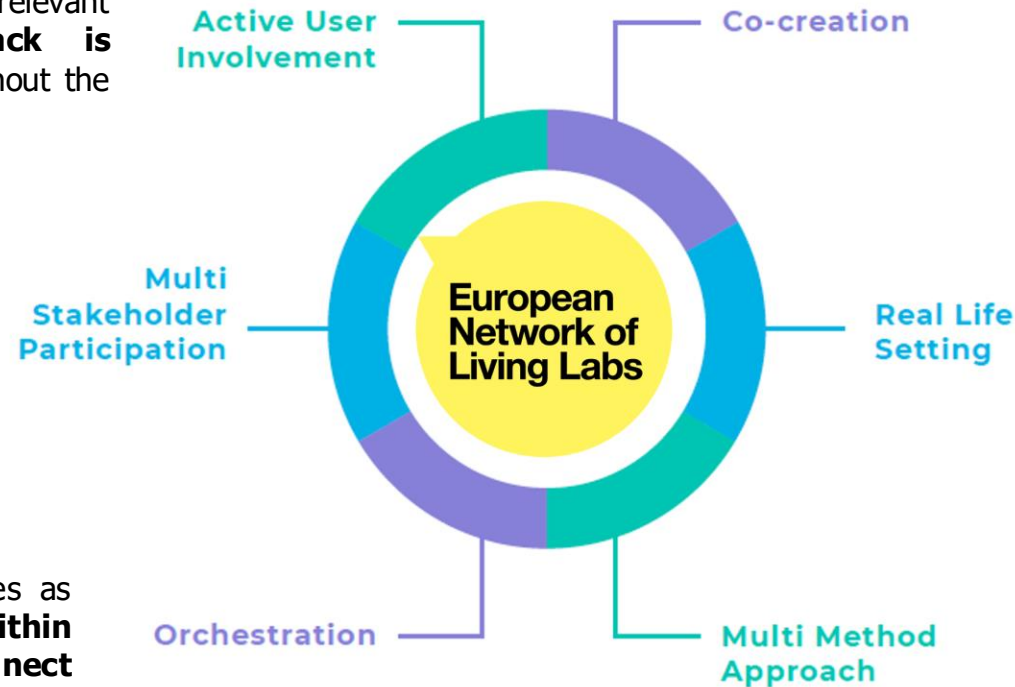
Each Living Lab activity is **problem driven**. Therefore, the methodological approach towards every individual activity will be **selected based on the expected outcomes** of the activity **and the stakeholders** who needs to be involved.

European Network of Living Labs

A Living Lab involves **relevant stakeholders 'actively'** in all relevant activities, ensuring **their feedback is captured and implemented** throughout the whole lifecycle of the innovation.

Taking a **holistic view on society**, involving stakeholders from the **quadruple helix model** (government, academia, private sector and citizens)/

The Living Lab operates as the **orchestrator within the ecosystem** to **connect and partner up** with relevant stakeholders.

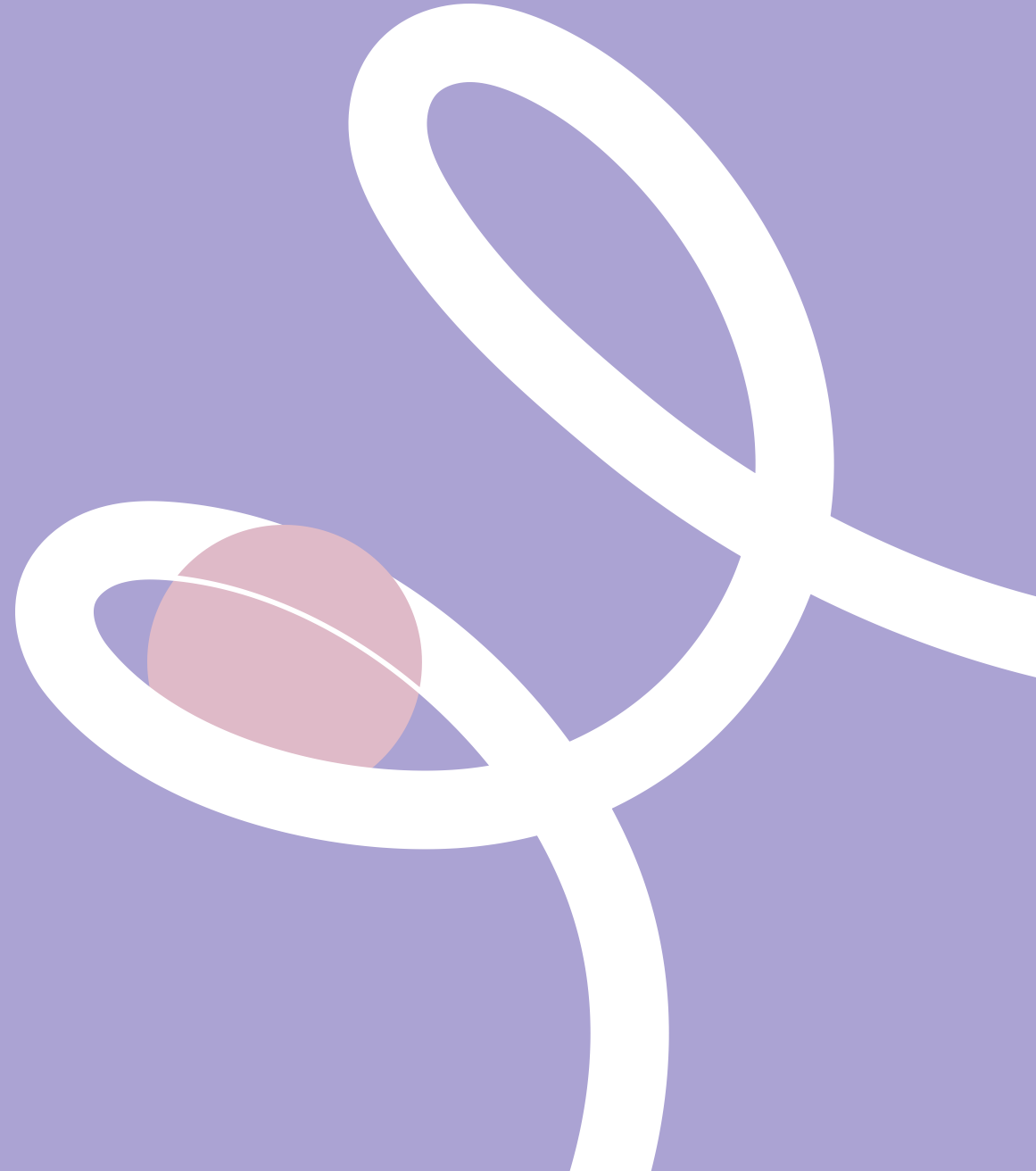


In a Living Lab values are **bottom-up co-created** not only for but also by all relevant stakeholders, ensuring a **higher adoption** at the end.

A Living Lab operates in the **real-life setting of the end users**, infusing innovations into their real life instead of moving the user to test sites to explore the innovations.

Each Living Lab activity is **problem driven**. Therefore, the methodological approach towards every individual activity will be **selected based on the expected outcomes** of the activity **and the stakeholders** who needs to be involved.

The three-layered model





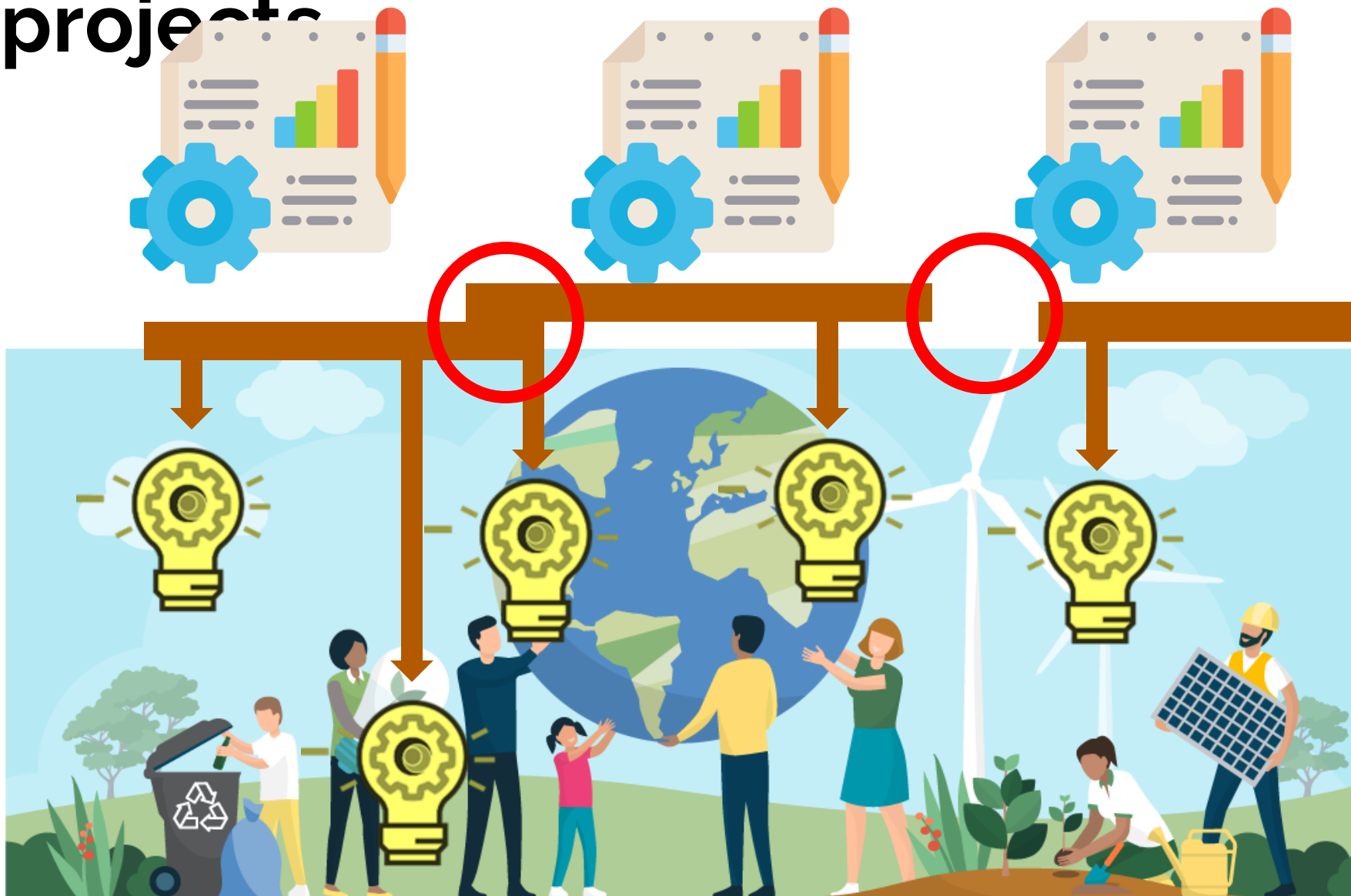
Three-layered model

LAYER	DEFINITION	RESEARCH PARADIGM	LEVEL
MACRO	Living Lab constellation consisting of organised stakeholders	Open Innovation: Knowledge transfers between organizations	PPPP
MESO	Living Lab innovation project using Living Lab methodologies	Open & User innovation: Real life experimentation, active user involvement, multi-method and multi-stakeholder	PROJECT
MICRO	Individual Living Lab research steps and activities linked to the stakeholders' assets and capabilities	User innovation: User involvement & contribution for innovation	ACTIVITIES



- Living Labs focus on:
- a well structured **organisation** on the **macro** level
 - With living lab **projects** in the **meso** level
 - Consisting of **co-created activities** in the **micro** level

Living Labs ≠ projects





Living Labs vs Traditional Approach

Unlike traditional project management, Living Labs focus on collaboration, adaptability, and real user involvement throughout the process.

	TRADITIONAL PROJECT	LIVING LAB
OBJECTIVE	Targeted to a preliminary defined project goal	Emphasizes co-creation and continuous improvement; final objectives change based on the needs of users
ROLE OF PROJECT MANAGER	Central role in planning, organizing, and directing project activities, and resources; centralized decision making	Facilitator and enabler of collaboration between users, stakeholders;; Decisions are often made collaboratively.
CONTROL POINT	Adherence to predefined project plan; rigidly defined milestones as control points	Control points for fluid and adaptive; Continuous feedback loops and iterative development; flexibility and responsiveness
ROLE OF USERS AND USER COMMUNITIES	Users are an object of study; limited involvement beyond initial requirements gathering and acceptance testing	Actively and equally involved throughout the project lifecycle
RESOURCES AND CAPACITIES	Resources and capabilities are often allocated based on predefined project requirements and objectives	Resources and capabilities are more dynamic, with an emphasis on building collaborative networks and leveraging the diverse expertise of users, stakeholders, and partners.
TOOLS	Utilizes traditional project management tools	Combination of traditional project management tools along with facilitative methods and group work tools

Leminen & Westerlund, 2009: https://www.researchgate.net/publication/228591969_From_innovation_networks_to_open_innovation_communities_Co-creating_value_with_customers_and_users

When and why using Living Labs



When to Use Living Labs?

1

Living labs are particularly effective for **innovation, co-creation, and evaluation in real-world contexts**. They provide valuable insights into how people interact with new ideas, products, and services, informing further development.

2

Living labs are well-suited for **addressing wicked problems**, which are complex and difficult to solve. They offer a **participatory and holistic approach to problem-solving**, involving stakeholders and users in the design and evaluation process.

3

Living labs can be applied to a wide range of wicked problems, such as **climate change, social justice, health and well-being, and education and learning**.

Living Labs provide a flexible and adaptable innovation approach that can help create positive change in society by addressing wicked problems through collaborative and participatory processes.

Why to use Living Labs?

Derisk innovation

Transforming clients into developers, LLs support the creation of products and services that are more suitable for the market



Real-life environment

LL provide a real-life environment for **testing and validating innovations**



Bridge the research/market gap

LL help bridge the gap between research and market uptake, leading to **more impactful innovations**



Insights into the adoption

LL provide valuable insights into the adoption and **sustainability of innovations** in the long run



Address complex societal challenges

LL are powerful tools for co-creating solutions that address complex societal challenges and **wicked problems** that are complex, dynamic, and often involve multiple stakeholders



Involve end-users in the innovation process

LL involve end-users in the innovation process, ensuring solutions are **tailored to their needs**



Faster innovation cycle

LL facilitate **rapid iteration and prototyping of solutions**, leading to faster innovation cycles



Quadruple helix

LL enable collaboration between different stakeholders, including researchers, industry partners, and communities

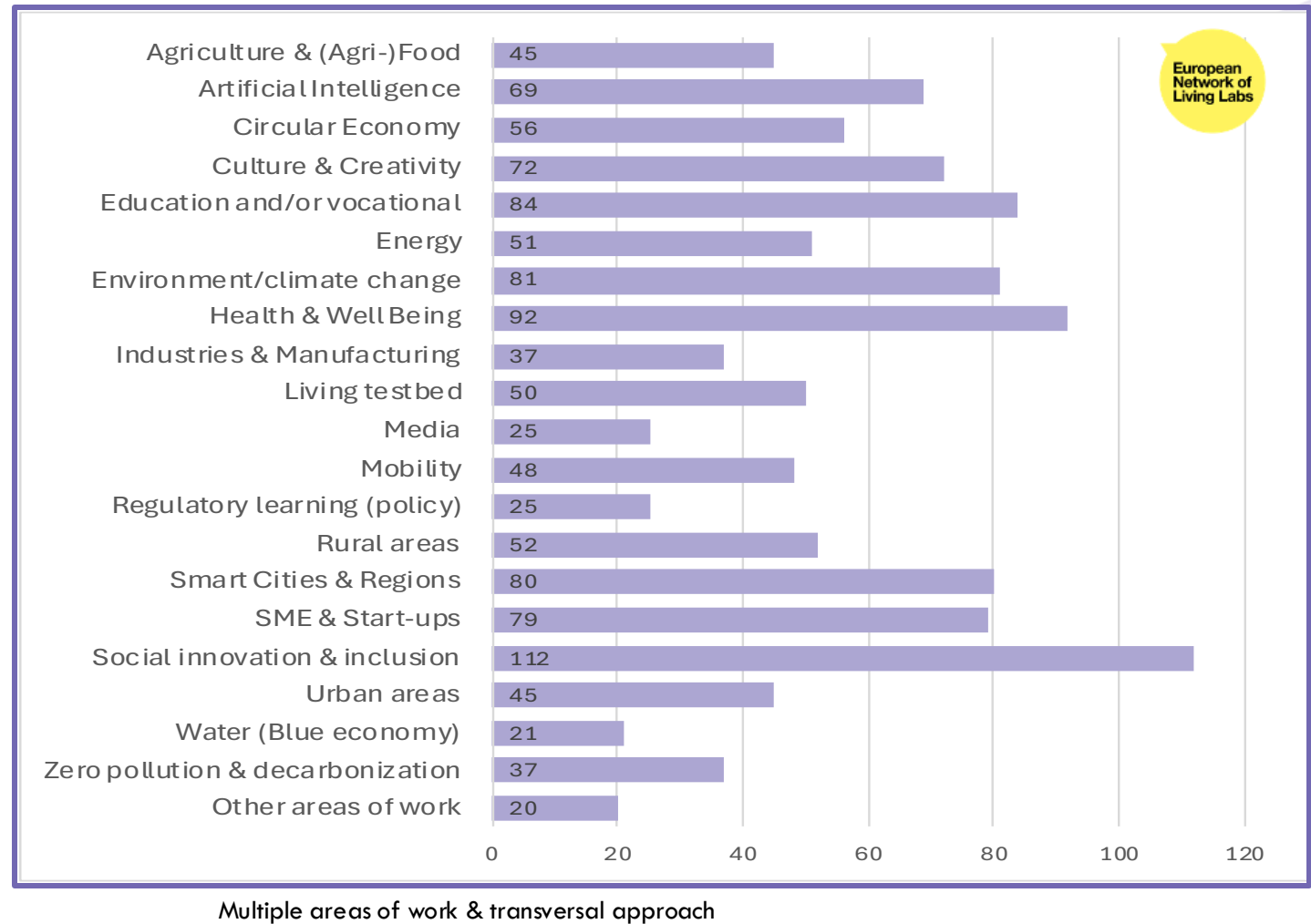
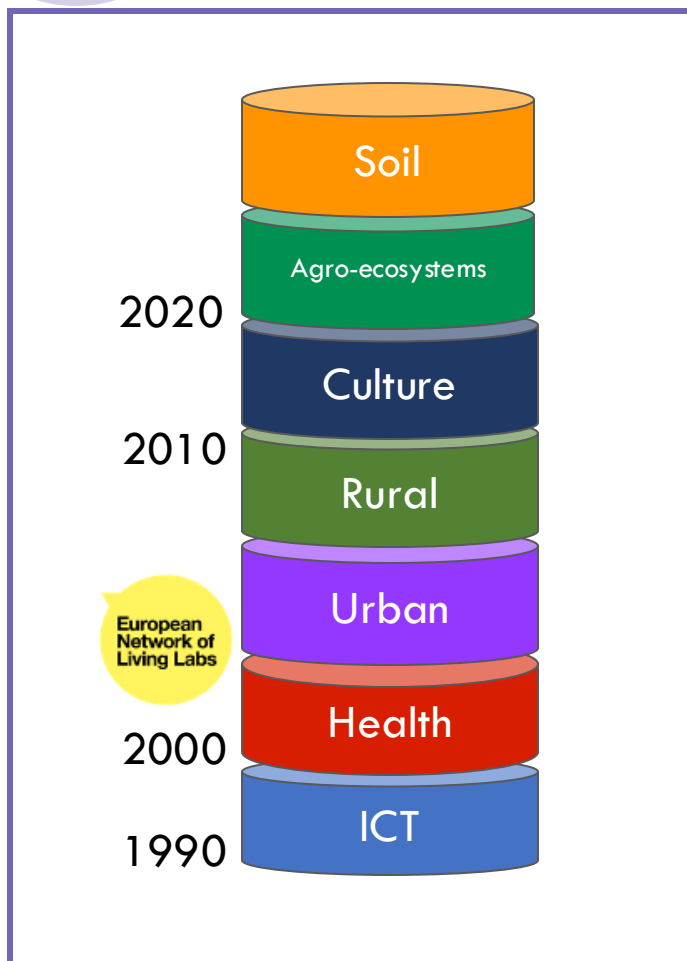




Types of Living Labs

Topics and focus domains

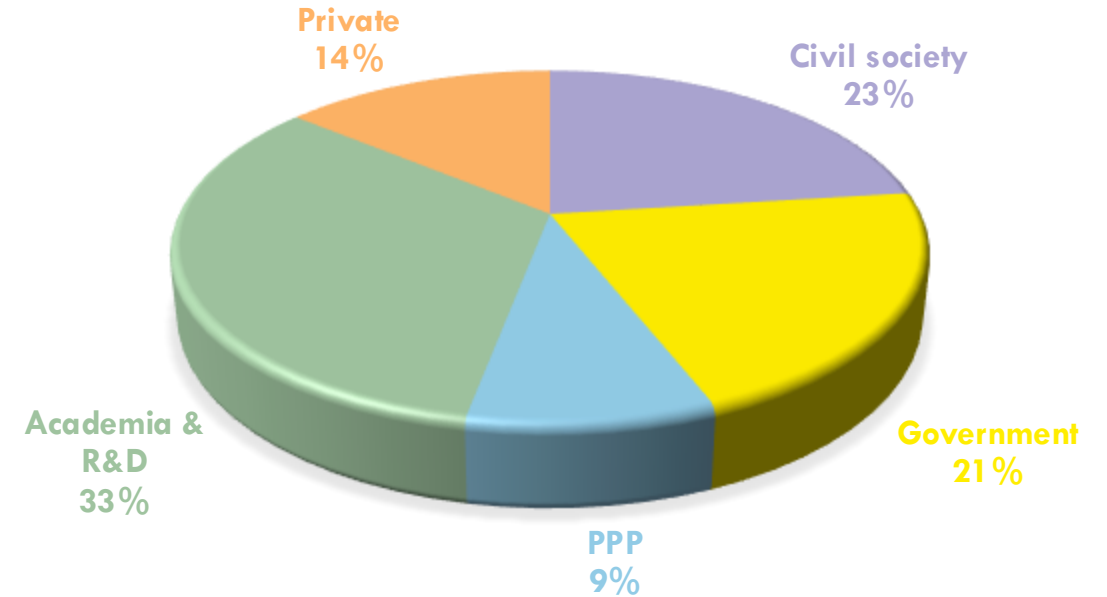
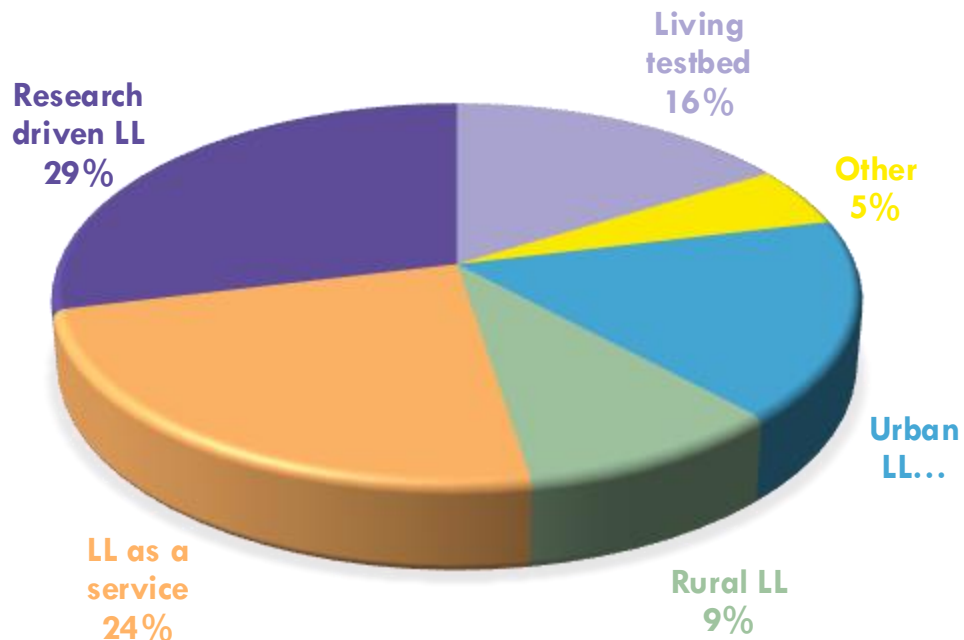
ENoLL Living Lab evolution & current area of work



ENoLL Living Labs types & host organizations

The mapping of ENoLL members shows a distribution of 5 main types of LL considering the nature & service of each organization.

The same LL can belong to more than one type, depending on their work.



- **Academia & research centres:** Universities, other higher education institutions, and fully research oriented organisations
- **Civil Society:** non-profit organisations whose main activity is not research oriented
- **Government:** Specialised agencies, municipalities and other local authorities, regional authorities
- **Private:** Organisations with a direct for-profit objective, mainly SMEs
- **Public & private partnership (PPP):** Projects or institutions of mixed management and responsibility

Living Lab classification *based on their objectives and ambitions:*

Living Labs for Grand
Societal Challenges

Living Labs for
Inclusive Soci(et)al
Engagement

Living Labs for
Policies, Governance,
Collaboration, and
Innovation
Ecosystems

Living Labs for
Business and
Emerging
Technologies

Campus / University
Living Labs

- This framework highlights the **versatility** and **impact** of Living Labs.
- It demonstrates their **capacity to tackle complex challenges**, drive innovation, and create value across various sectors and communities
- Categories are not mutually exclusive, as overlaps and crossovers between them are common.

Discover ENoLL Living Labs



Visit our Website at:
<https://enoll.org/our-members/>

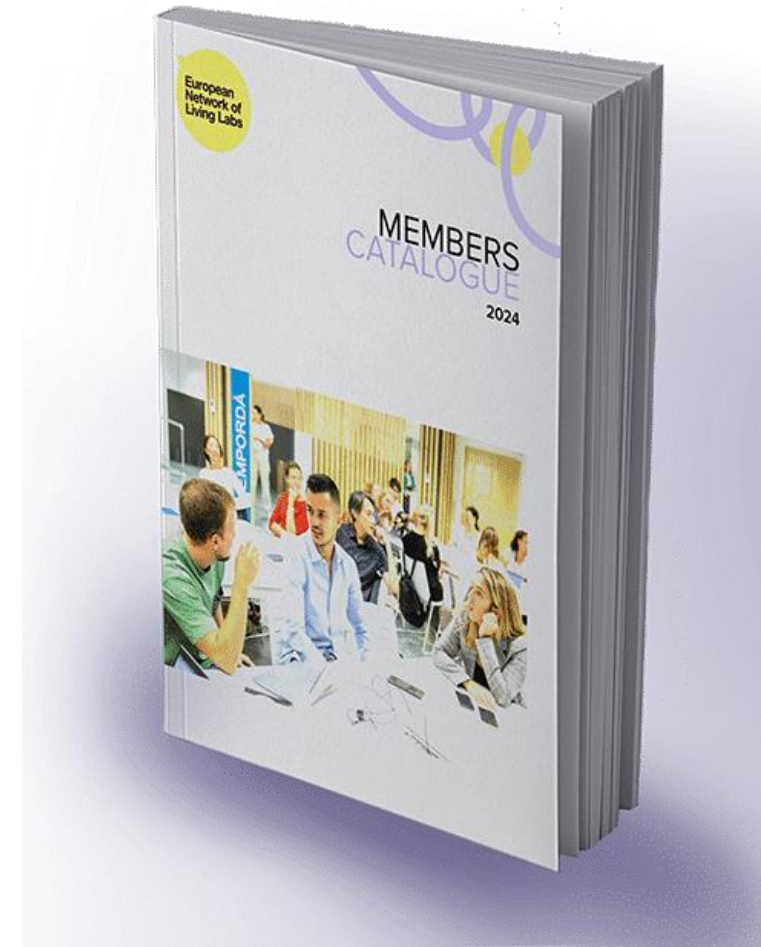
Search All Countries All Types Field of Expertise Areas of Work

ENoLL Members catalogue

Explore our Members Catalogue and connect with our global community of changemakers. With members from multiple regions and backgrounds, our Network is continually expanding, motivated by a shared passion for user-driven open innovation. Take a look inside!




<https://doi.org/10.5281/zenodo.14180612>



European
Network of
Living Labs

OpenLivingLab Days 2025

[Have a look at our website](#)

 **30 September – 3 October 2025**

 **Andorra la Vella, Andorra**

 **Co-organised with: ENoLL Member Andorra Living Lab / Andorra Research & Innovation**

 **Theme:** *Living Labs for Regenerative Futures: Connecting Local and Global Innovation Ecosystems*

**SAVE
THE
DATE**

**OPEN
LIVING
LAB
DAYS**



ANDORRA LIVING LAB



ENoLL Booklet

This booklet provides a comprehensive introduction to the origins, evolution, and future outlook of the Living Lab movement. It has been created to guide readers through the development of Living Labs over the years and highlight the path ahead.



<https://doi.org/10.5281/zenodo.14764597>





Alessandra Tricarico

Deputy Head of Network



 alessandra.tricarico@enoll.org

Thank you!





Funded by
the European Union



Join the movement as a **signatory** (national/regional/local administrations) or **supporter** (companies, academia, NGOs, etc)



living-in.eu



Living in EU

LIVING-IN.EU | **GO-LI.EU**



Living-in.EU Working Groups

Living-in.EU working groups are aligned with the Join, Boost, Sustain commitments, and cover financial, technical, legal, education, and monitoring aspects. Open to representatives from cities, regions, and member states, they provide a collaborative space for discussing challenges, sharing experiences, and working together to upscale digital solutions.



**Education & Capacity
Building**



Legal



Financial



**Monitoring &
Measuring**



Technical

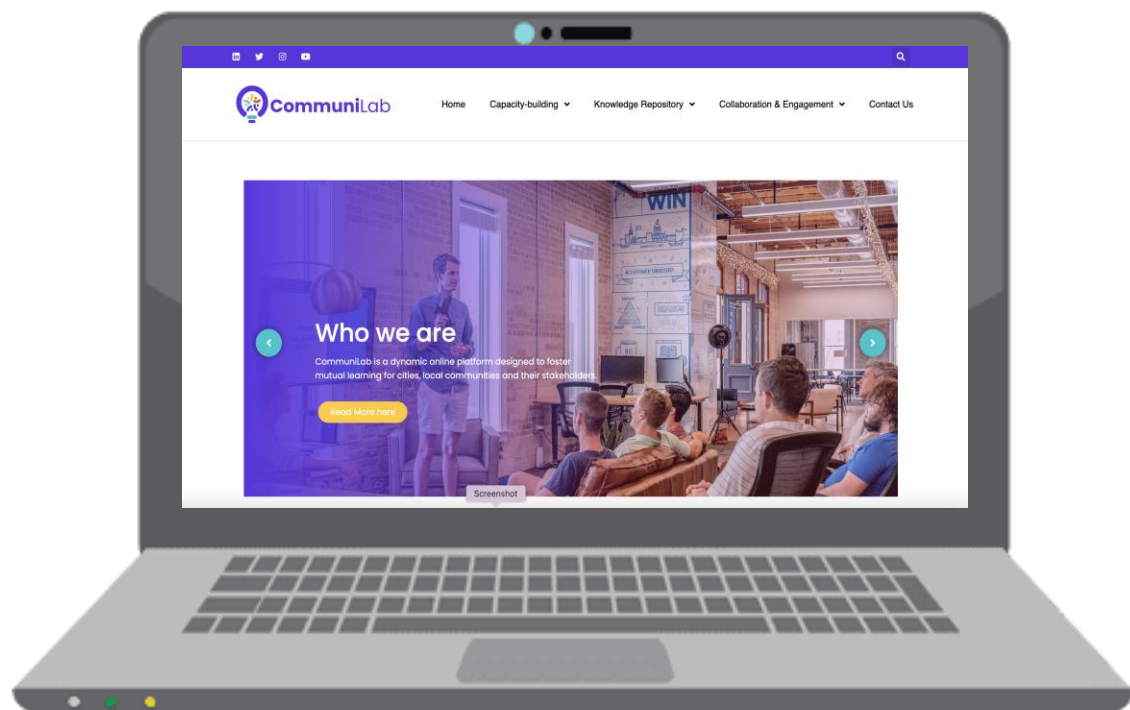
Join the Working Groups!





Funded by
the European Union

Check out CommuniLab here:



<https://communicity-project.eu/communi-lab/>



Funded by
the European Union

THANK YOU FOR JOINING!



COMON

**LL approach for vulnerable
communities**



primesight

146301



Maak
de toekomst
mee.

comon.gent

COMON



Vision

What do we stand for?



Ghent(ians)
Citizen participation



Vision

What do we stand for?



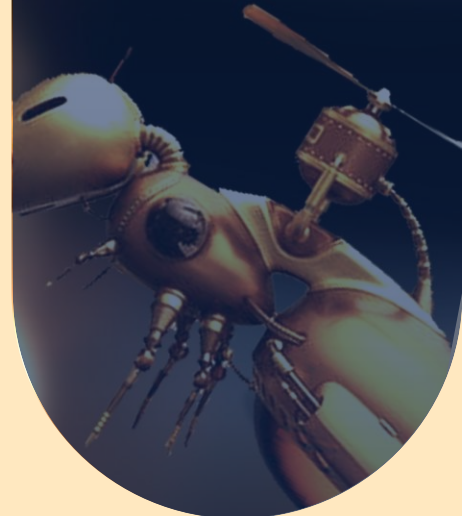
Ghent(ians)

Citizen participation



Technology

Belief in the potential



Vision

What do we stand for?



Ghent(ians)

Citizen participation



Technology

Belief in the potential



Prototyping

Think, but mainly act



COMON



- Core 3,5 FTE
- Extra people

COMON



- Core 3,5 FTE
- Extra people
- Budget

EXPERIM

Theme

Thematic approach





Theme

Thematic approach



One central theme

Chosen based on broad support



Theme

Thematic approach



One central theme

Chosen based on broad support



Theme

Thematic approach



One central theme

Chosen based on broad support



Theme

Thematic approach



One central theme

Chosen based on broad support



Timing

One and a half year



Theme

Thematic approach

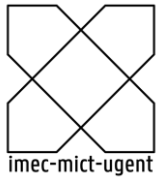
- One central theme
Chosen based on broad support
- Timing
One and a half year
- Collaboration
Searching for win-win

Approach

Design thinking

SOCIAL

DEBATE



Process in four phases



challenge



problem



solution



experiment

1. Challenge



1.1 Define priority



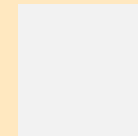
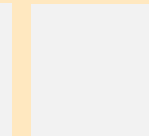
1.2 Internal pre-phase



1.3 Select challenge



1.4 Launch event



Doorlopend



1. Expo

2. Problem



2.1 Matchmaking



2.2 Stakeholder work



2.3 Desk research



2.4 Follow up



2.6 Interviews future



2. Public events

3. Solution



3.1 Cocreation Krook



3.2 School program



3.3 Make-a-thon



3.4 Duo-interviews



3.5 Micro financing



3. Thesis atelier

4. Experiment



4.1 Talent scouting



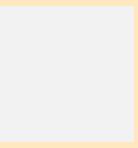
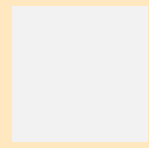
4.2 Microlabs x3



4.3 Experimentcafé



4.4 Anchoring



4. Publications



Thema 2024

- [Dak- en thuisloosheid](#)
- [Detentie](#)
- [Dienstverlening](#)
- [Financiën en schulden](#)
- [Gezondheid](#)
- [Integratie, taal en tolken](#)
- [Inclusieve maatschappij](#)
- [Kinderopvang](#)
- [Leefbare omgeving](#)
- [Mobiliteit](#)
- [Onderwijs, leren en ontplooiing](#)
- [Sociale media](#)
- [Vrije tijd](#)
- [Werk](#)
- [Wonen](#)

Zoeken



2024 signalen

1

Tekort aan laagdrempelige ontmoetingsplekken voor jongeren en jongvolwassenen

De behoefte aan een overdekte ontmoetingsplek leeft in veel wijken. Jongeren en jongvolwassenen vinden niet altijd een plek waar ze elkaar kunnen ontmoeten en bijvoorbeeld goedkoop een koffie kunnen drinken (zeker wanneer het buiten koud is). Hoewel er verschillende ontmoetingsplekken in Gent zijn, hebben deze vaak een vast publiek; waardoor andere doelgroepen zoals onder meer mensen met een migratieachtergrond, een handicap, maar evenzeer LGBTQ, ... zich niet direct welkom voelen of geneigd zijn deze plekken te gebruiken. Er is een gebrek aan brugfiguren die drempels kunnen verlagen. Het is belangrijk dat jongeren een eigen geschikte plek (overdekt en geluiddempend) kunnen creëren in de openbare ruimte. Daarnaast is het cruciaal dat deze plekken goed vindbaar zijn en dat er inspanningen worden geleverd om de drempels te verlagen. Ook het hebben van buitenruimtes is belangrijk, omdat veel jongeren in de stad geen tuin hebben om in te hangen. Daarnaast is er veel stigmatisering van de buurtbewoners naar hangjongeren.

Het project “Samen op Straat” kan als een goed voorbeeld dienen van hoe dergelijke initiatieven



Ghent
stinks!



GEPLAATST OP DO, 21.09.2023

"Hoe kunnen we de beschikbare ruimte om te bewegen en te sporten slim benutten?"

[Piet, Bert en Dieter](#)



1. Challenge



1.1 Define priority



1.2 Internal pre-phase



1.3 Select challenge



1.4 Launch event

2. Problem



2.1 Matchmaking



2.2 Stakeholder work



2.3 Desk research



2.4 Follow up



2.6 Interviews future



2. Public events

3. Solution



3.1 Cocreation Krook



3.2 School program



3.3 Make-a-thon



3.4 Duo-interviews



3.5 Micro financing



3. Thesis atelier

4. Experiment



4.1 Talent scouting



4.2 Microlabs x3



4.3 Experimentcafé



4.4 Anchoring



4. Publications

Doorlopend



1. Expo



"Hoe kunnen we wandelvoetbal populair maken in Gent en een hechte gemeenschap opbouwen?"

Katrien



"Hoe kunnen we patiënten motiveren om te blijven bewegen, ook wanneer ze niet langer ongezond zijn?"

Servaas

"Hoe kunnen we kwetsbare thuiswonende ouderen aan het bewegen krijgen?"

Emma



"Hoe kunnen we mensen tussen 30 en 50 jaar elkaar eenvoudiger laten ontmoeten om samen te bewegen?"

David



"Hoe kunnen we mensen met een neurologische aandoening meer aan het bewegen krijgen?"

Kristl



"Hoe kunnen we beweging tijdens verplaatsingen plezieriger, toegankelijker en veiliger maken in de stad?"

Joyca en Delfien



"Hoe kunnen we mensen die langdurig ziek zijn de moed en de energie geven om te sporten?"

Eline



"Hoe kan dans gebruikt worden als stimulans om mensen te laten bewegen?"

Evelien

1. Challenge



1.1 Define priority



1.2 Internal pre-phase



1.3 Select challenge



1.4 Launch event



Doorlopend



1. Expo

2. Problem



2.1 Matchmaking



2.2 Stakeholder work



2.3 Desk research



2.4 Follow up



2.6 Interviews future



2. Public events

3. Solution



3.1 Cocreation Krook



3.2 School program



3.3 Make-a-thon



3.4 Duo-interviews



3.5 Micro financing



3. Thesis atelier

4. Experiment



4.1 Talent scouting



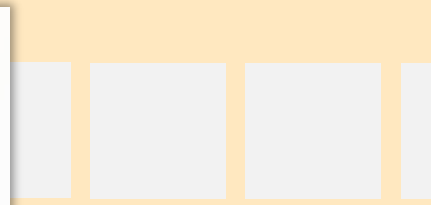
4.2 Microlabs x3



4.3 Experimentcafé



4.4 Anchoring



4. Publications

"Hoe kunnen we
gezondheidszorg
verstaanbaar maken voor
iedereen in onze
superdiverse stad?"

Leyla Yüksel

(Gentse gynaecoloog)





1. Challenge



1.1 Define priority



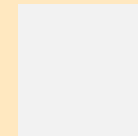
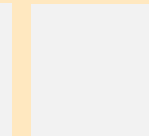
1.2 Internal pre-phase



1.3 Select challenge



1.4 Launch event



Doorlopend



1. Expo

2. Problem



2.1 Matchmaking



2.2 Stakeholder work



2.3 Desk research



2.4 Follow up



2.6 Interviews future



2. Public events

3. Solution



3.1 Cocreation Krook



3.2 School program



3.3 Make-a-thon



3.4 Duo-interviews



3.5 Micro financing



3. Thesis atelier

4. Experiment



4.1 Talent scouting



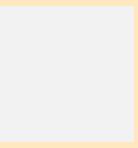
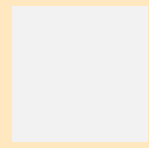
4.2 Microlabs x3



4.3 Experimentcafé



4.4 Anchoring



4. Publications



1. Challenge



1.1 Define priority



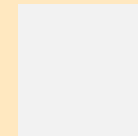
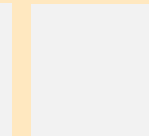
1.2 Internal pre-phase



1.3 Select challenge



1.4 Launch event



Doorlopend



1. Expo

2. Problem



2.1 Matchmaking



2.2 Stakeholder work



2.3 Desk research



2.4 Follow up



2.6 Interviews future



2. Public events

3. Solution



3.1 Cocreation Krook



3.2 School program



3.3 Make-a-thon



3.4 Duo-interviews



3.5 Micro financing



3. Thesis atelier

4. Experiment



4.1 Talent scouting



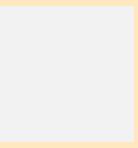
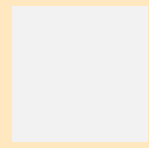
4.2 Microlabs x3



4.3 Experimentcafé



4.4 Anchoring



4. Publications





What do you want to play?



Premium Support Download



Install App

Sign up

Log in

Your Library



Create your first playlist

It's easy, we'll help you

Create playlist

Let's find some podcasts to follow

We'll keep you updated on new

Legal Safety & Privacy Center

Privacy Policy Cookie Settings

About Ads Accessibility

Cookies



English



een podcast van Jong Gent in Actie vzw

Podcast

Mint To Be Tea

Jong Gent in Actie vzw

Follow



About

In deze podcast gaan trajectbegeleidster Isabelle en outreacher Amaury van JGiA vzw in gesprek met jongeren, ervaringsdeskundigen, experts of simpelweg mensen met passie over een thema waar jongeren mee bezig zijn.

No rating ☆



Culture

Society



1. Challenge



1.1 Define priority



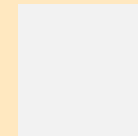
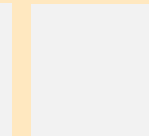
1.2 Internal pre-phase



1.3 Select challenge



1.4 Launch event



Doorlopend



1. Expo

2. Problem



2.1 Matchmaking



2.2 Stakeholder work



2.3 Desk research



2.4 Follow up



2.6 Interviews future



2. Public events

3. Solution



3.1 Cocreation Krook



3.2 School program



3.3 Make-a-thon



3.4 Duo-interviews



3.5 Micro financing



3. Thesis atelier

4. Experiment



4.1 Talent scouting



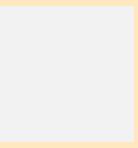
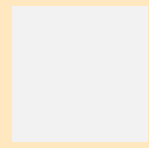
4.2 Microlabs x3



4.3 Experimentcafé



4.4 Anchoring



4. Publications











1. Challenge



1.1 Define priority



1.2 Internal pre-phase



1.3 Select challenge



1.4 Launch event

2. Problem



2.1 Matchmaking



2.2 Stakeholder work



2.3 Desk research



2.4 Follow up



2.6 Interviews future



2. Public events

3. Solution



3.1 Cocreation Krook



3.2 School program



3.3 Make-a-thon



3.4 Duo-interviews



3.5 Micro financing



3. Thesis atelier

4. Experiment



4.1 Talent scouting



4.2 Microlabs x3



4.3 Experimentcafé



4.4 Anchoring



4. Publications

Doorlopend



1. Expo





COMON



**Proficiat
aan de
winnaars!**



1. Challenge



1.1 Define priority



1.2 Internal pre-phase



1.3 Select challenge



1.4 Launch event

2. Problem



2.1 Matchmaking



2.2 Stakeholder work



2.3 Desk research



2.4 Follow up



2.6 Interviews future



2. Public events

3. Solution



3.1 Cocreation Krook



3.2 School program



3.3 Make-a-thon



3.4 Duo-interviews



3.5 Micro financing



3. Thesis atelier

4. Experiment



4.1 Talent scouting



4.2 Microlabs x3



4.3 Experimentcafé



4.4 Anchoring



4. Publications

Doorlopend



1. Expo

Computer
says no...



1. Challenge



1.1 Define priority



1.2 Internal pre-phase



1.3 Select challenge



1.4 Launch event

2. Problem



2.1 Matchmaking



2.2 Stakeholder work



2.3 Desk research



2.4 Follow up



2.6 Interviews future



2. Public events

3. Solution



3.1 Cocreation Krook



3.2 School program



3.3 Make-a-thon



3.4 Duo-interviews



3.5 Micro financing



3. Thesis atelier

4. Experiment



4.1 Talent scouting



4.2 Microlabs x3



4.3 Experimentcafé



4.4 Anchoring



4. Publications

Doorlopend



1. Expo

Dolox





RevOnc

samenvatting

moeilijke woorden

MR LUMBALE WERVELZUIL

MRI van de lumbale wervelzuil:

Klinische inlichtingen: lumbo-ischialgie links

Lumbo-ischialgie

Pijn in de onderrug/benen/billen
Door verdrukking van een zenuw die naar de
voeten loopt



lees meer >

Normaal aspect van het laagthoracale
ruggenmerg en van de conus medullaris.
Degeneratieve discusveranderingen op het
niveau L4-L5 met dehydratatie
nucleus pulposus

lumbo-ischialgie

MIA



RingMe



UrbanCubby



1. Challenge



1.1 Define priority



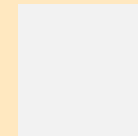
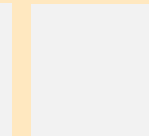
1.2 Internal pre-phase



1.3 Select challenge



1.4 Launch event



Doorlopend



1. Expo

2. Problem



2.1 Matchmaking



2.2 Stakeholder work



2.3 Desk research



2.4 Follow up



2.6 Interviews future



2. Public events

3. Solution



3.1 Cocreation Krook



3.2 School program



3.3 Make-a-thon



3.4 Duo-interviews



3.5 Micro financing



3. Thesis atelier

4. Experiment



4.1 Talent scouting



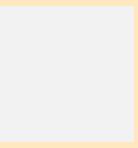
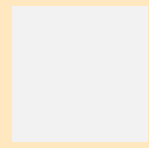
4.2 Microlabs x3



4.3 Experimentcafé



4.4 Anchoring



4. Publications





1. Challenge



1.1 Define priority



1.2 Internal pre-phase



1.3 Select challenge



1.4 Launch event

2. Problem



2.1 Matchmaking



2.2 Stakeholder work



2.3 Desk research



2.4 Follow up



2.6 Interviews future



2. Public events

3. Solution



3.1 Cocreation Krook



3.2 School program



3.3 Make-a-thon



3.4 Duo-interviews



3.5 Micro financing



3. Thesis atelier

4. Experiment



4.1 Talent scouting



4.2 Microlabs x3



4.3 Experimentcafé



4.4 Anchoring



4. Publications

Doorlopend



1. Expo



4. Publications



SUARA COOPERATIVA

2025

#PersonesQueDecideixen

KEY FIGURES



284
Managed
Services



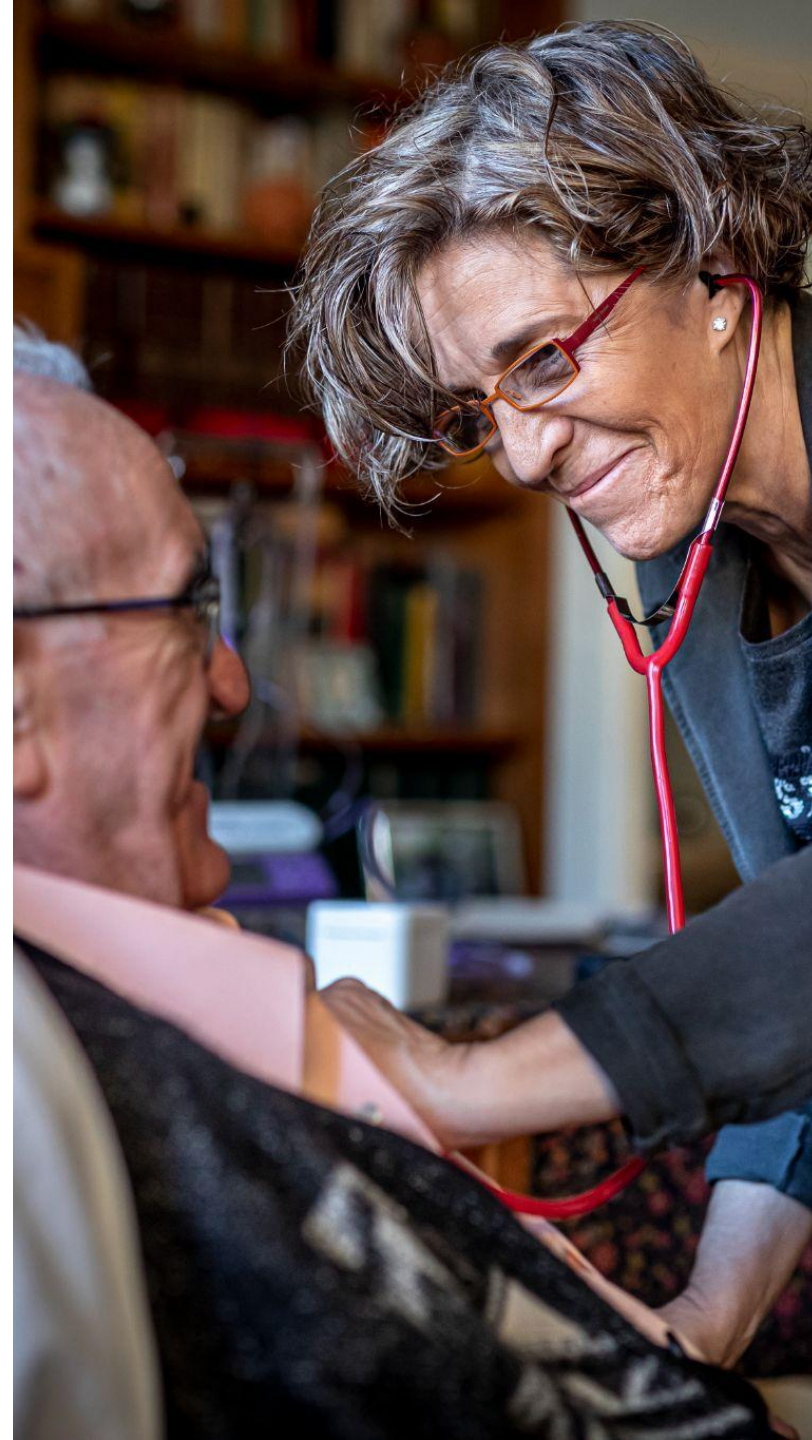
38.918
People
assisted



4.749
Job
positions

Data as of December 31, 2022:

1.603 associate members
88% female workforce
66,001 hours of training
118,010,946 € operating income
27,211,974 € own funds
244,087,533 € integrated social value



WHAT WE DO?

OUR SERVICES

We offer a wide range of options to meet the needs of individuals throughout their life cycle, and we tailor our services to the requirements of each client and individual served.



Home Care



Functional Diversity



Facilities for the Elderly



Childhood, Adolescence, and Youth



Early Childhood



Supporting Education



Adult Education



Women and Family



Social Inclusion



Justice



MISSION AND VALUES

WE TRANSFORM THE SOCIAL ENVIRONMENT

INNOVATIVE

We incorporate technology into our activities to ensure maximum efficiency.

APPROACHABLE

The cooperative's activity revolves around people: professionals, individuals served, clients, and collaborators.

PARTICIPATORY

We democratically manage the cooperative, collaborate in networks with external partners, and empower our stakeholders.

SOCIALLY RESPONSIBLE

Commitment to the environment, territorial development, job creation, and reinvestment of corporate surpluses..

Social Digital Lab

PEOPLE | TECH | CARE 2025

#PersonesQueDecideixen



LABORATORY OF SOCIAL INNOVATION

Welcomes **startup ecosystem**, entrepreneurship,
new projects and digital services.

Facilitates **distributed innovation**
and **agile work** methodologies in the organization

Social Digital Living Lab

Support lever for the digital transformation of social economy organizations and creation of services with social impact.

Transformation towards a more innovative, digital, co-creative organization, interconnected with the ecosystem, open to universities, companies and prepared for change, experimentation and the promotion of participation.



Innovation ecosystem



PÚBLICS ACTORS



CITIZENSHIP



PRIVATE SECTOR



KNOWLEDGE

Living
Lab

“Open and collaborative.

Space for experimentation open to the public:

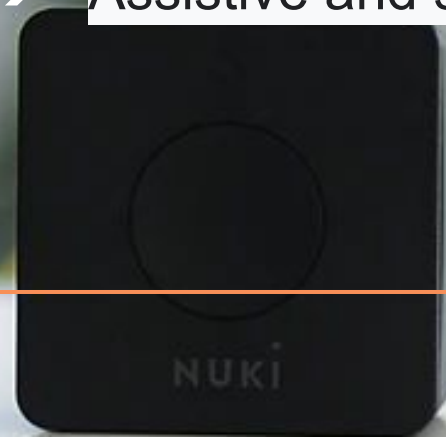
Cool thinker agents



Pilot test



- Home automation
- Monitoring System and Telemedicine.
- Sensorization of the homes
- Assistive and social robotics





HOME CARE TRANSFORMATION

Social and assistive robotics



Project driven by: Social Digital Lab in collaboration with UPC (IRI) i Salto group.

suara
COOPERATIVA

IRI
Institut
de Robòtica
i Informàtica
Industrial

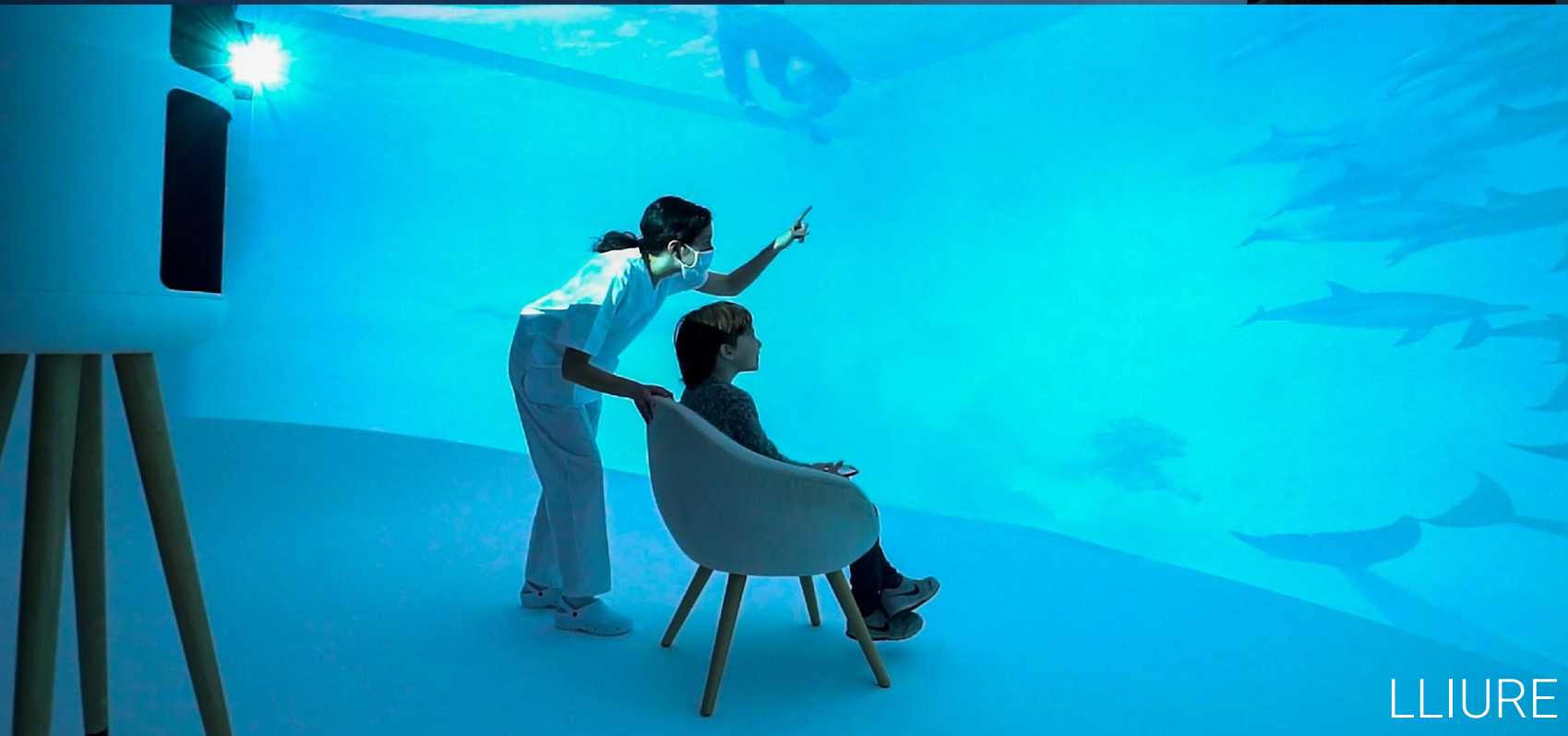
25
years
GROUP SALTÒ
intelligent technology



RELAXACIÓ



ESTIMULACIÓ



LLIURE

IMMERSIVE REALITY TO SUPPORT EMOTIONAL WELLBEING



REVIVE

RURAL AREAS IN SOUTHERN CATALONIA

TRAINING
SESSIONS

COLLABORATIVE
DESIGN





OUTCOMES

CHALLENGES



ACCOMPANY

Building trust and human connections is essential

NETWORK

**The professionals
Community the neighbors**

**Neighborhood support.
Collaboration agreements with
neighborhood entities**

HANDLE/TAKE CARE

The professionals

**Teams of professionals who work
in the territories/neighborhoods
with presence and increase the
frequency of contracts.
New professional skills.**

PERSON CENTERED APPROACH

**Vulnerable communities are
not passive recipients. but
key actors in designing
solutions that affect their
lives**



Thank you

Contact: claragarciab@suara.coop



#PersonesQueDecideixen